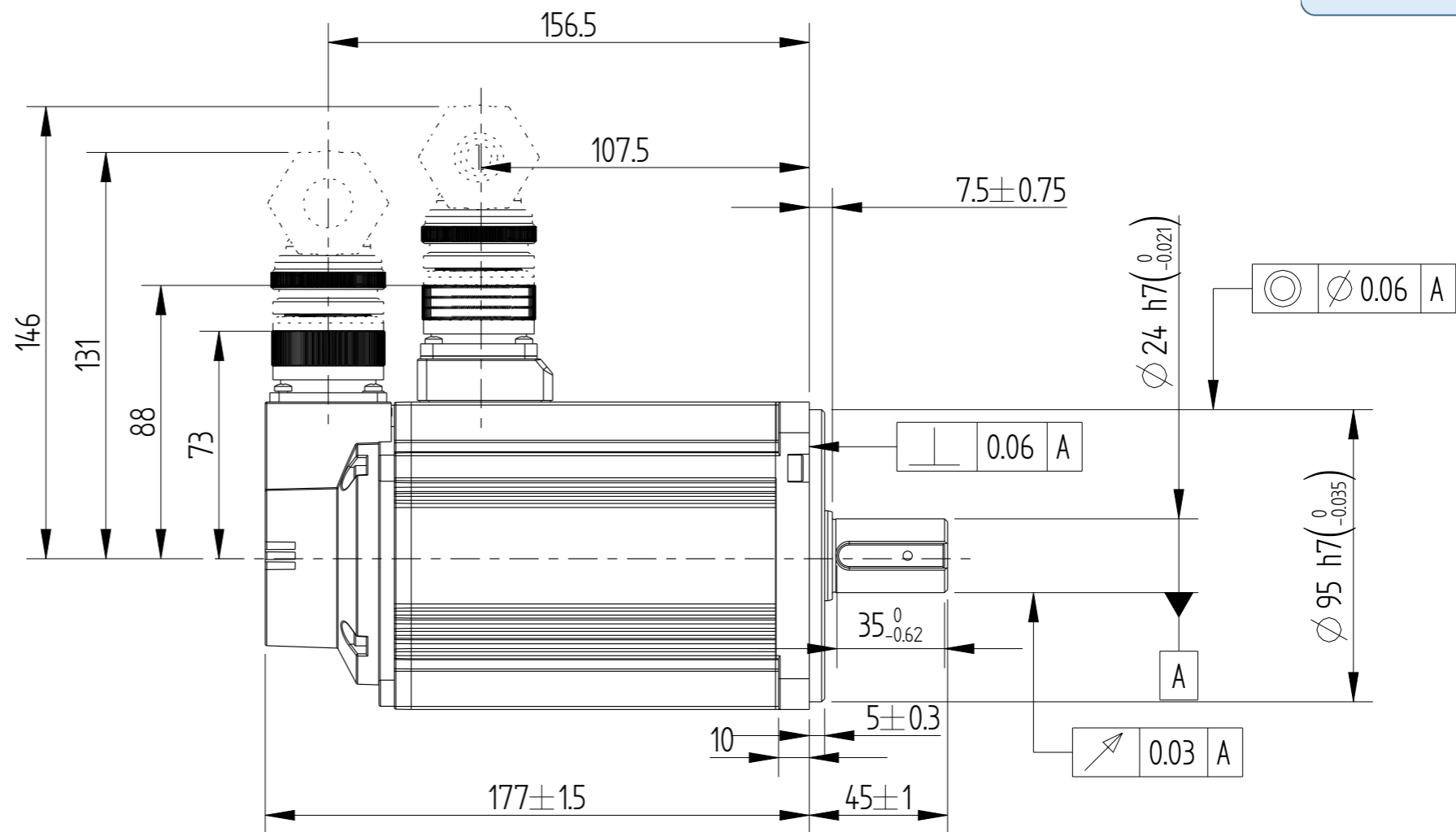
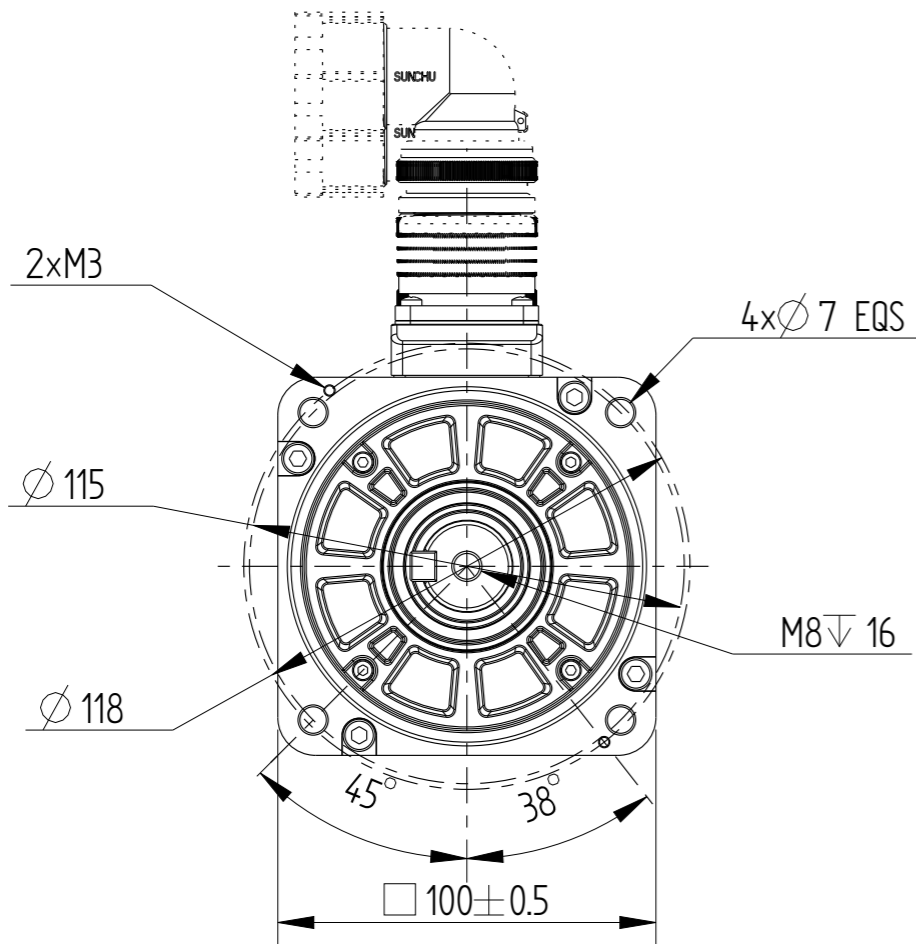


正样
2023.01.16
B01

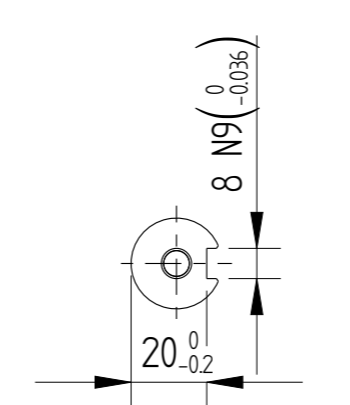
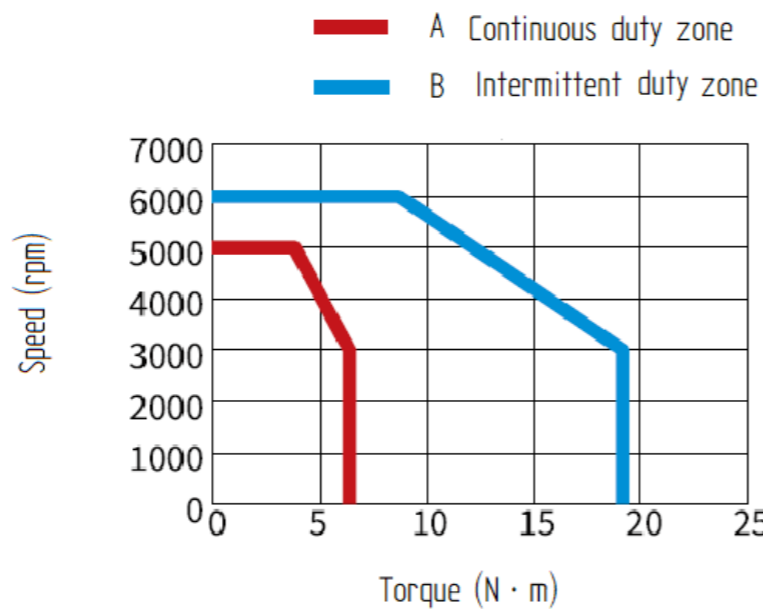
外部公开

Unit: Millimeter (mm)

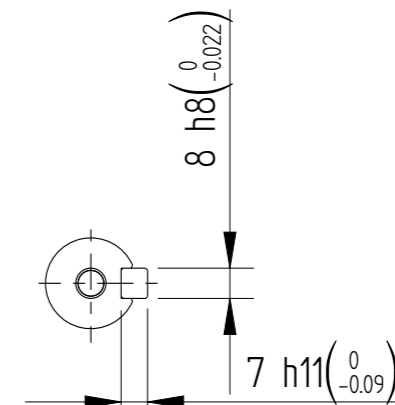


Basic function parameters

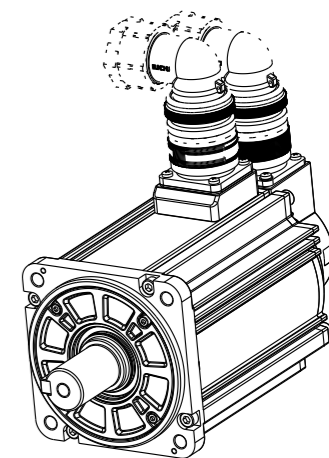
Rated power KW	2
Rated voltage V	380
Rated current A	5.6
Peak current at rated speed A	20
Rated torque Nm	6.36
Peak torque at rated speed Nm	19.1
Rated speed rpm	3000
Max speed rpm	6000
Rotor inertia kg \cdot cm ²	2.92 \pm 10%
Encoder resolution	26bit
Insulation class	F(155° C)
Protection Level	IP67
Static torque of brake Nm	/
Brake power supply	/
Duty cycle	S1
Radial line load N	\leq 686
Axial load N	\leq 196

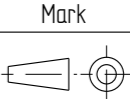


Dimension of shaft end



Dimension of shaft end with key



				Motor Outline Drawing			01118120-WX	
B01	New Archive	/	20230916					
Version	Change method	Changed by	Date					
Design	/			/			Mark	
Check	/							
Craft	/							
Verify	/			Weight	Scale	Version	Page 1 of 1	
Standardization	/			5.5kg	12	B01	Model	MS1H2-20C30□-S631R-INT
Approve	/							